

CRESCENT VILLAGE TOWNHOUSES • START BUILDING EQUITY IN EUGENE'S URBAN VILLAGE TODAY

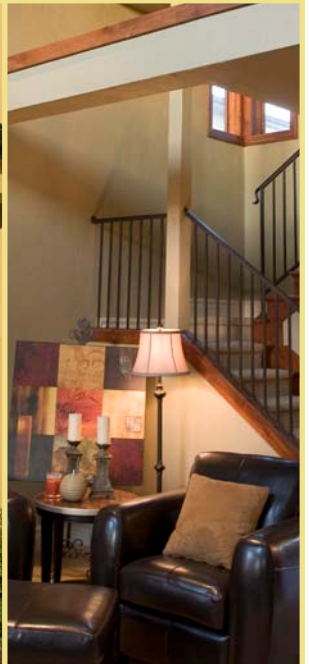
LIVE. WORK. PLAY.

modern

Located on a pedestrian-friendly street within walking distance of Town Center, the architecturally distinctive Crescent Village Townhomes feature spacious plans, gorgeous interior finishes, functionally beautiful kitchens, and private garden courtyards and terraces. As importantly, every Crescent Village home is built to high sustainability standards to ensure that the quality of the air you breathe is as high as your energy bills are low.

RENT TO OWN NOW.

Start building equity before you buy in Eugene's most dynamic new neighborhood! For information and a tour, visit the Crescent Village leasing office at 2763 Shadow View Drive, or contact us at (541) 344-4644.

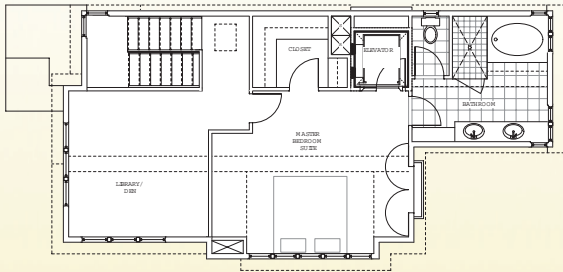


crescent village

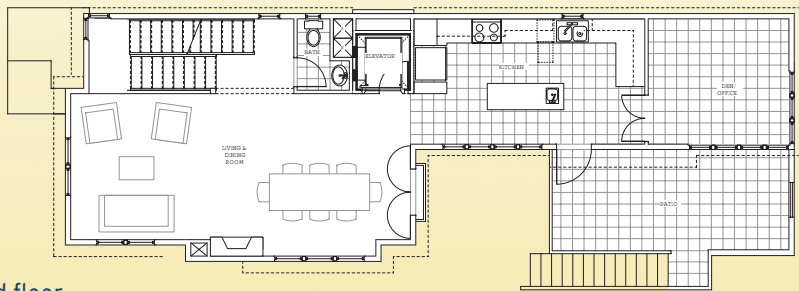
EUGENE'S URBAN VILLAGE

www.crescent-village.com • (541) 344-4644

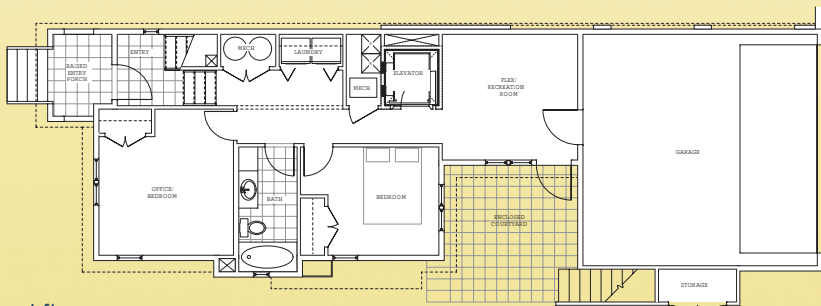
PLANS



third floor



second floor



ground floor

FEATURES

- Granite counters and hardwood cabinetry
- Gourmet, Energy Star rated appliances
- Hardwood floors
- Elevator
- 2-car garage with opener
- Generous storage
- Low-maintenance yard with underground sprinklers
- Private outdoor terraces and patios
- Energy Star and Earth Advantage Certified for comfort, health, and decreased energy bills
- Walking distance to the restaurants, boutiques, and services in Crescent Village's Town Center and the Organic Community Garden

Rent to own options available!

crescent village

EUGENE'S URBAN VILLAGE

www.crescent-village.com • (541) 344-4644

